



# Stainless Steel Washdown *Reducers & Motors*

Worm gear boxes  
From: 1/8 To 10 HP

Stainless Steel Motors  
From: 1/8 To 20 HP

INCH - Dimensions



NOW OPEN - OUR BRAND NEW FACILITY IN BURLINGTON, ONT



Kel-Tech Electric Canada Ltd, has moved. Come see our brand new facility on 2 acres in North Burlington. With the new building we have launched a state of the art assembly and repair centre.

ON THE WEB - [WWW.KEL-TECHELECTRIC.COM](http://WWW.KEL-TECHELECTRIC.COM)

Visit our web site:  
[www.kel-techelectric.com](http://www.kel-techelectric.com)  
For the most up to date  
versions of catalogs and  
dimensions.  
Request drawings and  
CAD models

**KEL-TECH**  
ELECTRIC CANADA LTD.

Call us toll-free 1-877-279-4123 Established in 1990

HOME PRODUCTS COMPANY 2D-3D DRAWINGS CATALOGUES CONTACT US

### Stainless Steel

Motors and gearboxes  
for washdown applications

Kel-Tech provides solutions to help fight bacteria  
and improve cleanliness on your machinery ... [LEARN MORE](#)

**Kel-Tech Electric Canada Ltd. was formed in 1990.**  
Our goal has always been to have products that are of superior quality following strict guidelines and government regulations and to be able to deliver these products to our customers in a timely fashion and a fair market price.

Over the past twenty years Kel-Tech Electric has received many awards for its outstanding performance

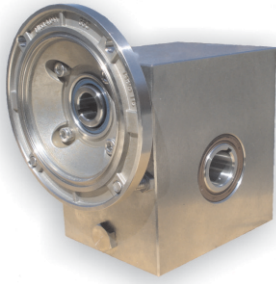
**Stainless Steel Washdown**

- Motors [▶ Learn More](#)
- Reducers [▶ Learn More](#)
- Inline Ratio Multipliers [▶ Learn More](#)
- Double C Face Brakes [▶ Learn More](#)
- VFD - Nema 4X [▶ Learn More](#)

**Aluminum - Paint Free**

- Motors [▶ Learn More](#)

# Index



## Stainless Steel Reducers

Section  
1

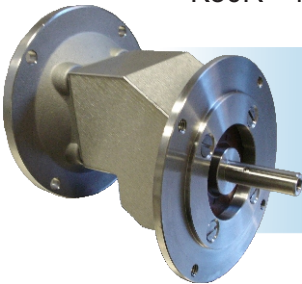
Stainless Steel Washdown Gearboxes

**Hollow Output Bore**

K30R - 0.625" K45R - 0.75" K50R - 1.00"  
K63R - 1.25" K85R - 1.50" K110R - 2.00"

**New - Now available in Metric output bores upon request**

K30R - 14mm K45R - 18mm K50R - 25mm K63R - 25 / 30mm K85R - 35mm K110R - 42mm



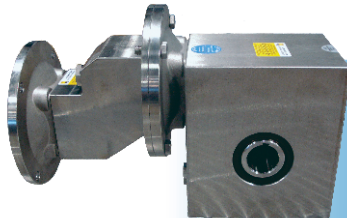
## Stainless Steel Ratio Multipliers

Section  
2

Combine a SS Reducer with a SS Ratio Multiplier  
to create a helical Worm Reducer to get ratios as high as 1040:1

K63R + 411I	K85R + 411I	K110R + 511I
1020.57:1	1042.29:1	1039.50:1
<b>1.71 RPM</b>	<b>1.68 RPM</b>	<b>1.68 RPM</b>
1274 In.lbs	2677 In.lbs	4678 In.lbs

See a full list of  
multiplier options  
in Section 3



## Helical Worm Reducer Combinations

Section  
3



## Stainless Steel Motors

Section  
4

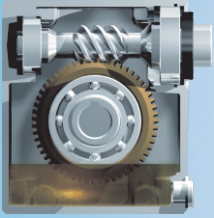
Washdown Stainless Steel Motors  
Standard and New Premium Efficiency - IE3

## Complete Pricing List

Section  
5

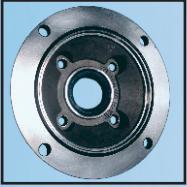
# Stainless Steel Reducers K30R-K110R

## STANDARD FEATURES

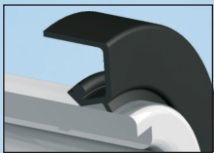


Special Enclosure to keep adequate lubrication with low Oil qty. to avoid internal pressures.

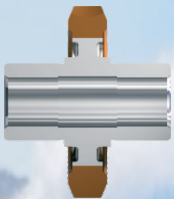
New Redesigned input flange



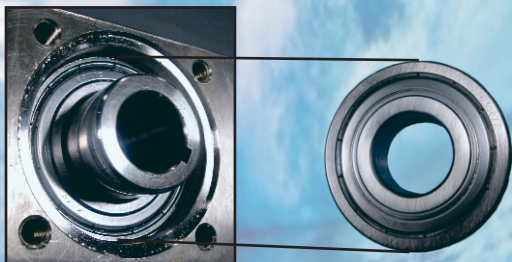
O-rings on all closing covers.



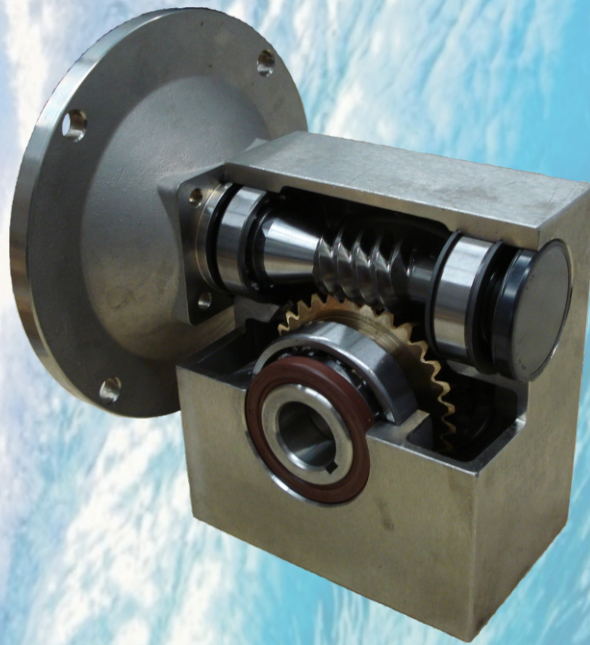
VITON output seal with external dust protection lips.



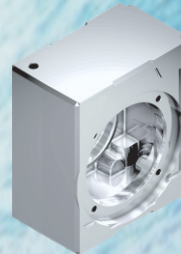
Stainless Steel Hollow shaft.



ZZ Bearings on both sides of the input worm

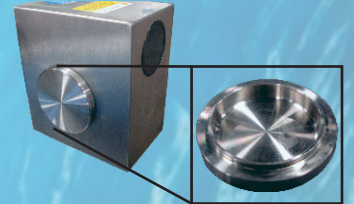


**New**  
Metric output bores now available

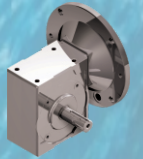


Full Stainless Steel Housing.

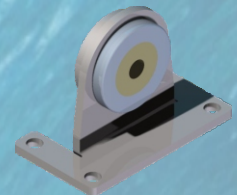
## OPTIONS



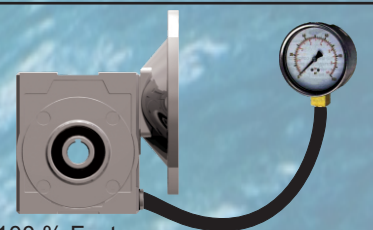
Protective seals cup to stand high pressure cleaning for hollow or extended shaft version.



Optional interchangeable right or left hand output shafts available.


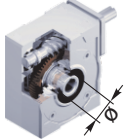
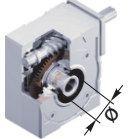
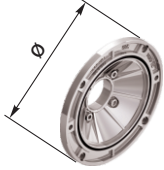
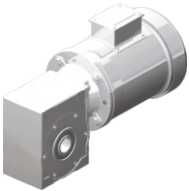




ALSO AVAILABLE:  
Optional torque arm for simple four bolt mounting.

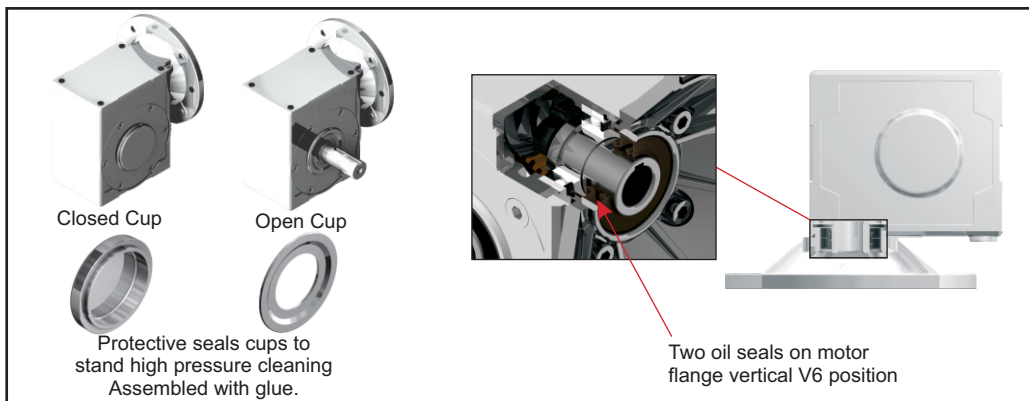


100 % Factory pressure tested.



<b>K</b> ↓ Type	<b>45R</b> ↓ Size	<b>10</b> ↓ Ratio	<b>Z</b> ↓ Hub	<b>∅</b> ↓ Output shaft	<b>W</b> ↓ Motor size	<b>B3</b> ↓ Mounting Position
	<b>30R</b> <b>45R</b> <b>50R</b> <b>63R</b> <b>85R</b> <b>110R</b>					See Page 25
<b>K</b>		<b>Z</b>	<b>∅</b>	<b>M</b>	Without flange	See Page 25
			<b>STANDARD</b> K30R ⇒ 0.625" K45R ⇒ 0.750" K50R ⇒ 1.000" K63R ⇒ 1.250" K85R ⇒ 1.500" K110R ⇒ 2.000"		<b>Z</b>	For Type - R
<b>M</b>			<b>On request METRIC Hollow Shaft</b> K30R ⇒ 14mm K45R ⇒ 18mm K50R ⇒ 25mm K63R ⇒ 25mm K85R ⇒ 35mm K110R ⇒ 42mm	<b>S</b>	<b>WITH NEMA MOTOR FLANGE</b>	
					<b>W</b>	⇒ 56C
<b>R</b>					<b>X</b>	⇒ 143/5TC
					<b>Y</b>	⇒ 182/4TC
					<b>AA</b>	⇒ 213/5TC
					<b>For Modular Base Type B</b>	
					<b>K45R</b>	⇒ $\varnothing 5/8$ "
					<b>K50R</b>	⇒ $\varnothing 5/8$ "
					<b>K63R</b>	⇒ $\varnothing 7/8$ "
					<b>K85R</b>	⇒ $\varnothing 1" - 1/8$ "
					<b>On request IEC Flanges</b>	
					<b>B14</b>	
					<b>O=56</b> ( $\varnothing 80$ mm)	Stainless steel
					<b>P=63</b> ( $\varnothing 90$ mm)	Stainless steel
					<b>Q=71</b> ( $\varnothing 105$ mm)	Stainless steel
					<b>R=80</b> ( $\varnothing 120$ mm)	Stainless steel
					<b>T=90</b> ( $\varnothing 140$ mm)	Stainless steel
					<b>U=100</b> <b>112</b> ( $\varnothing 160$ mm)	Stainless steel

## OPTIONS



- **Special lubrication for low temperature (<20° or 68°F)**

## Selection - Input RPM 1750

\* Available motor flanges

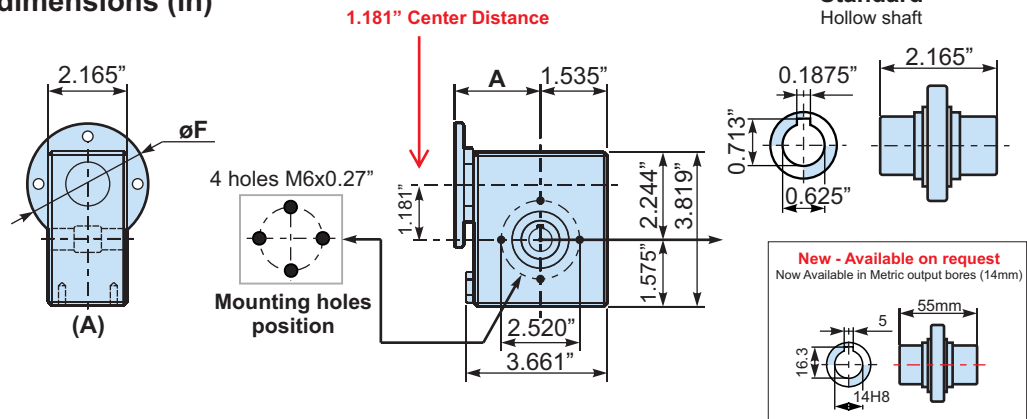


Type	Output Speed (RPM)	Ratio	Input HP	Output Torque [In.Lbs]	Service factor	Available B14 motor flanges		Ratio Code	Type
						O	P		
						56	63		
<b>K30R</b>	350	<b>5</b>	0.24	35	4.0	*	*	01	<b>K30R</b>
	250	<b>7</b>	0.24	48	2.9	*	*	02	
	175	<b>10</b>	0.24	67	2.1	*	*	03	
	117	<b>15</b>	0.24	95	1.7	*	*	04	
	88	<b>20</b>	0.24	121	1.3	*	*	05	
	58	<b>30</b>	0.24	161	1.1	*	*	06	
	43.8	<b>40</b>	0.12	99	1.7	*	*	07	
	28.7	<b>61</b>	0.12	132	1.3	*	*	08	
	21.9	<b>80</b>	0.12	166	0.8	*	*	09	

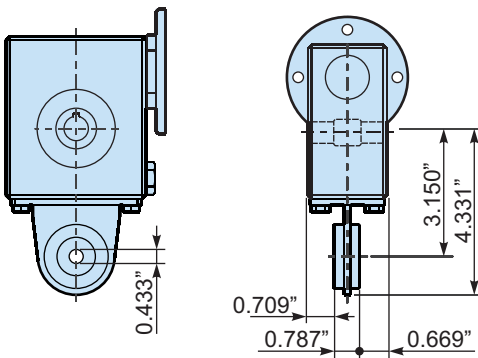
Supplied with Reduction Bushing

## Standard hollow shaft dimensions (in)

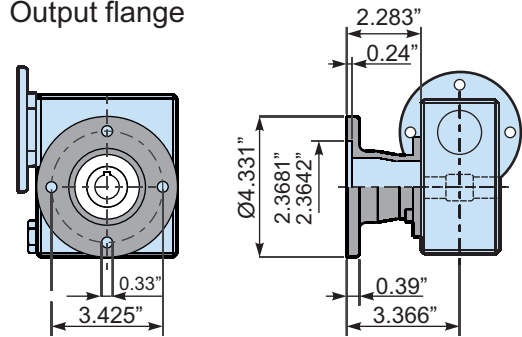
M. flanges	øF	A
56B14	3.15"	2.421
63B14	3.54"	2.461



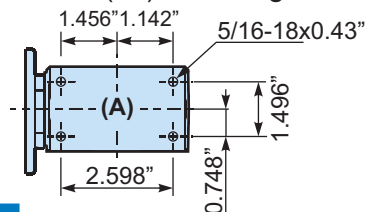
## Optional Torque Arm



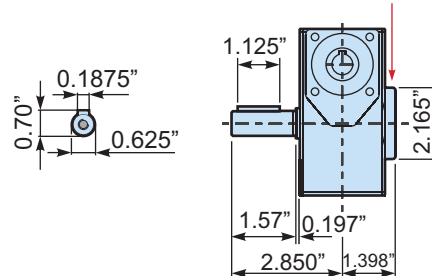
## Output flange



## Bottom - Side (A) Mounting Holes



## Optional Output shaft Left or Right Angled Protection cup (by request)

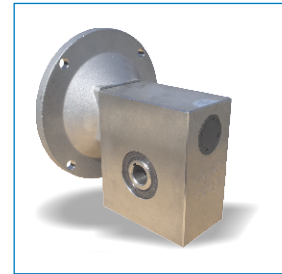


Wormbox weight	lb.
K30R	5.5

**Selection - Input RPM 1800**

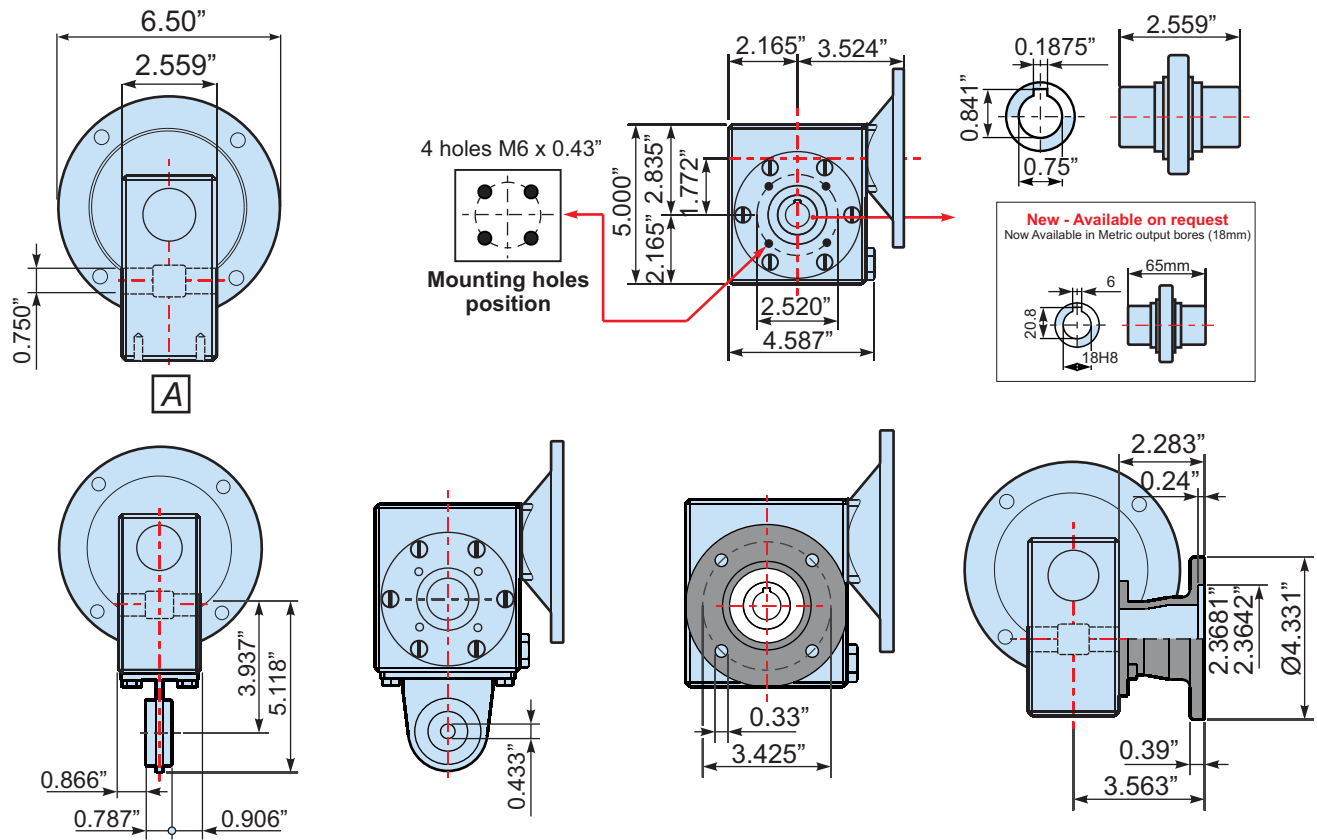
\* Available motor flanges

Type	Output Speed (RPM)	Ratio	Input HP	Output Torque [In.lbs]	Service Factor				Ratio Code	Type
						W	X	Y		
						56C	143/5TC	182/4TC		
<b>K45R</b>	250	<b>7</b>	1.00	202	1.3	*			01	<b>K45R</b>
	175	<b>10</b>	0.75	213	1.2	*			02	
	125	<b>14</b>	0.75	291	0.9	*			03	
	83.3	<b>21</b>	0.50	253	1.4	*			04	
	62.5	<b>28</b>	0.50	328	1.1	*			05	
	47.3	<b>37</b>	0.33	277	1.2	*			06	
	38	<b>46</b>	0.33	323	1.1	*			07	
	29.1	<b>60</b>	0.25	303	1.2	*			08	
	25	<b>70</b>	0.12	163	1.6	*			09	
	17.2	<b>102</b>	0.12	215	1.2	*			10	

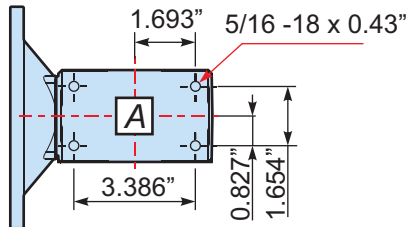


**Standard hollow shaft dimensions**

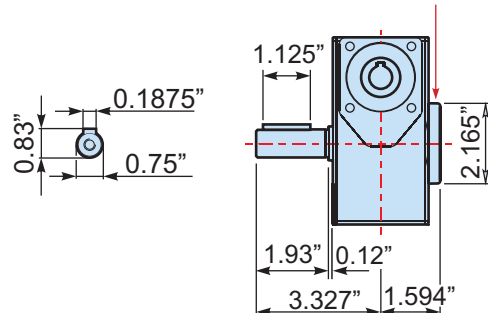
**Standard**  
Hollow shaft



Bottom - Side (A) Mounting Holes



**Optional Output shaft Left or Right Angled**  
Protection Cup (by request)

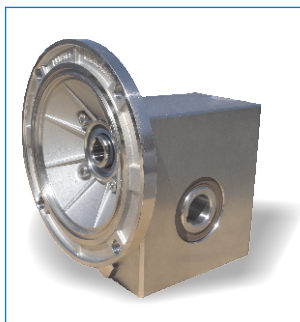


Wormbox weight	lb.
K45R	11.0

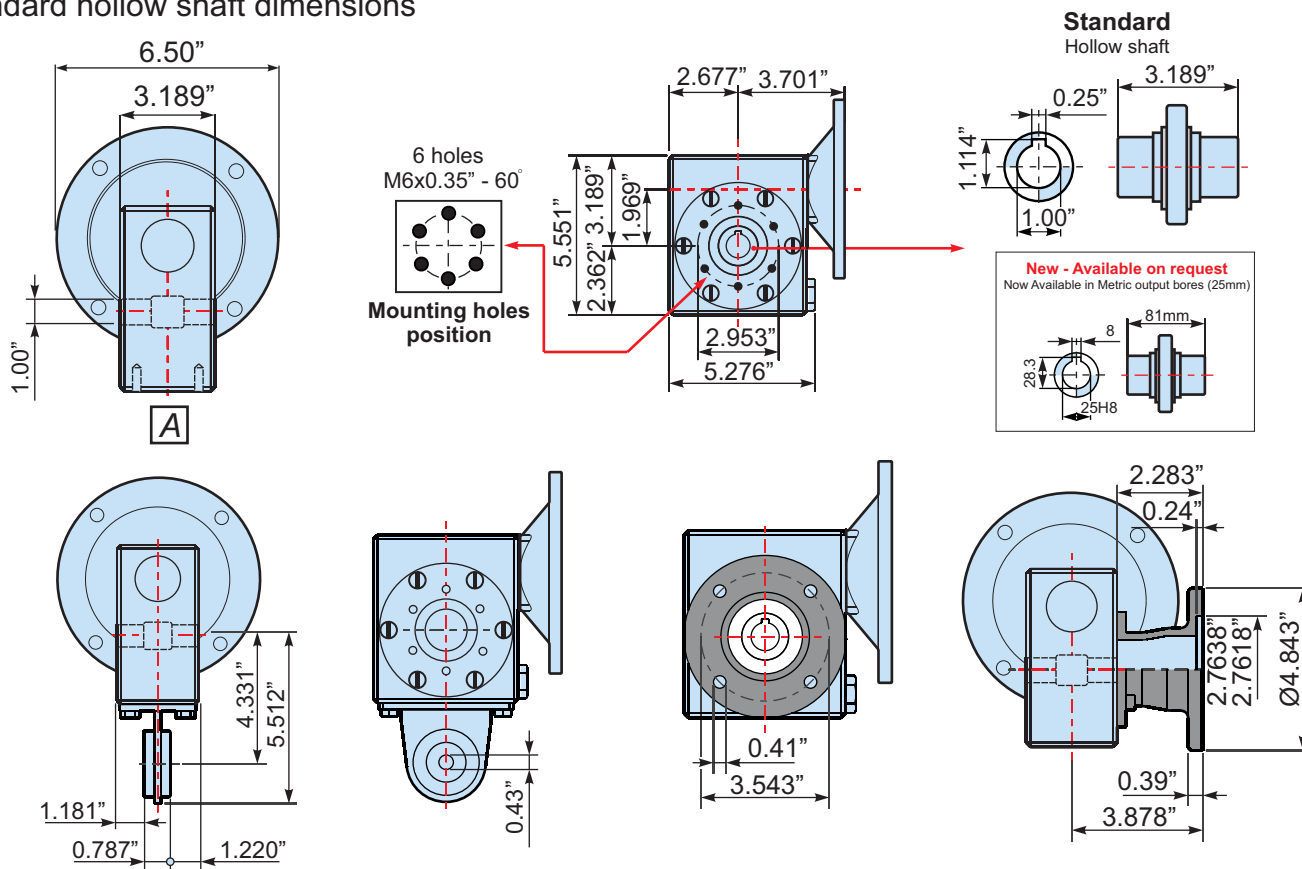
Selection - Input RPM 1800

\* Available motor flanges

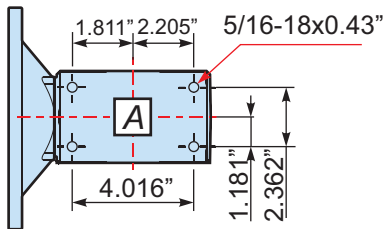
Type	Output Speed (RPM)	Ratio	Input HP	Output Torque [In.lbs]	Service Factor	Motor Flange			Ratio Code	Type
						W	X	Y		
						56C	143/5TC	182/4TC		
K50R	250	7	2.00	413	1.2	*			01	K50R
	175	10	1.50	432	1.2	*			02	
	125	14	1.00	398	1.4	*			03	
	97.2	18	1.00	486	1.1	*			04	
	67.3	26	0.75	485	1.2	*			05	
	58.3	30	0.75	567	1.1	*			12	
	48.6	36	0.50	447	1.4	*			06	
	40.7	43	0.50	511	1.1	*			07	
	29.2	60	0.33	414	1.3	*			08	
	25.7	68	0.33	461	1.1	*			09	
	21.9	80	0.25	389	1.2	*			10	
17.5	100	0.25	450	1.0	*			11		



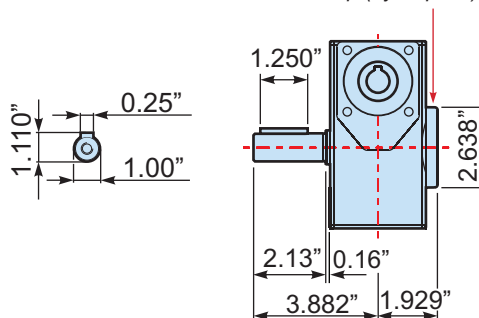
Standard hollow shaft dimensions



Bottom - Side (A) Mounting Holes



Optional Output shaft Left or Right Angled  
Protection Cup (by request)



Wormbox weight	lb.
K50R	16.1



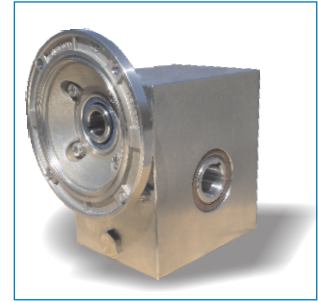
**Selection - Input RPM 1800**

\* Available motor flanges

Type	Output Speed (RPM)	Ratio	Input HP	Output Torque [In.lbs.]	Service Factor	W	X	Y	Ratio Code	Type
						56C	143/5TC	182/4TC		

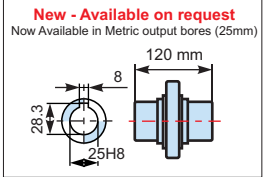
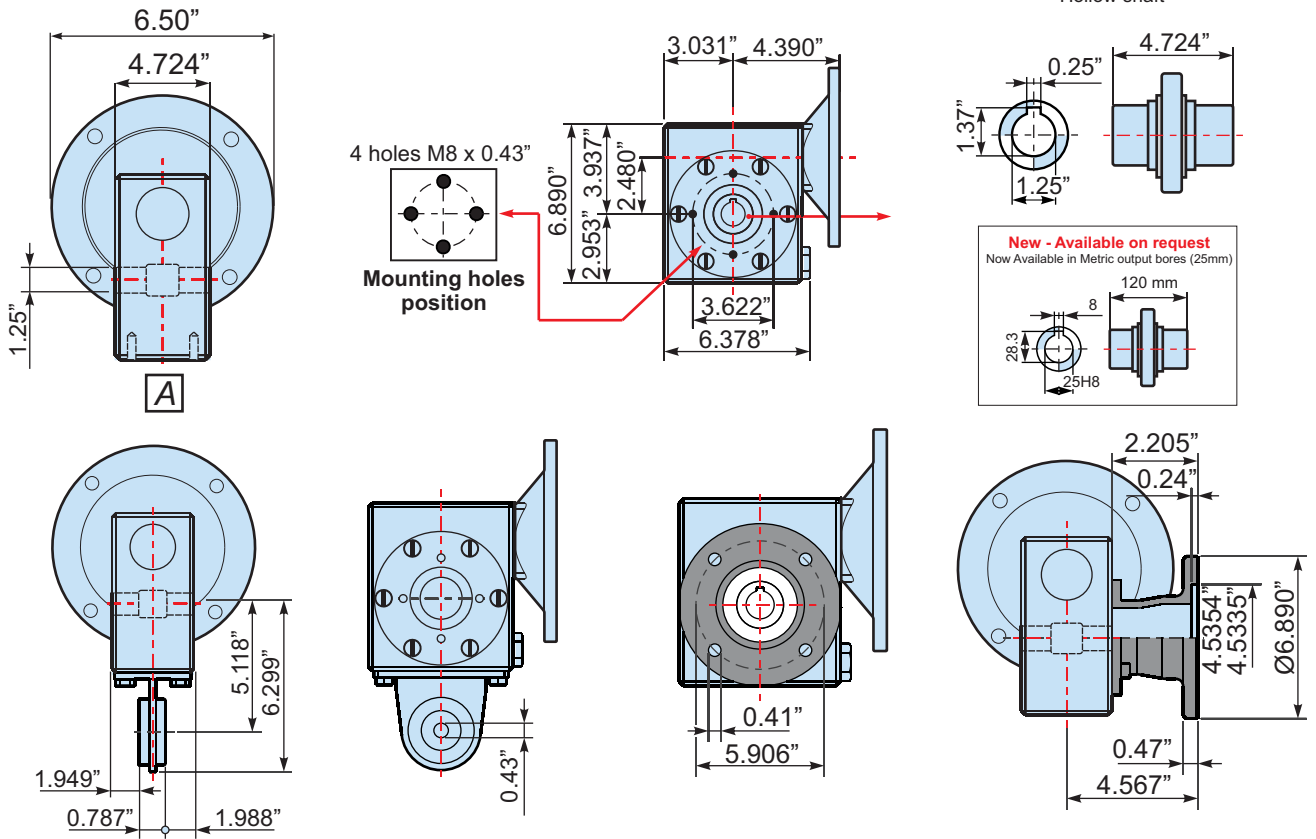
<b>K63R</b>	250	<b>7</b>	2.00	418	2.5	*	*		01	<b>K63R</b>
	175	<b>10</b>	2.00	583	2.0	*	*		02	
	116.7	<b>15</b>	2.00	854	1.4	*	*		03	
	92.1	<b>19</b>	2.00	1068	1.1	*	*		04	
	72.9	<b>24</b>	1.50	972	1.2	*	*		05	
	58.3	<b>30</b>	1.50	1199	1.0	*	*		06	
	48.6	<b>36</b>	1.00	882	1.4	*	*		07	
	38.9	<b>45</b>	1.00	1070	1.1	*	*		08	
	26.1	<b>67</b>	0.50	724	1.4	*	*		09	
	21.9	<b>80</b>	0.50	821	1.2	*	*		10	
	18.6	<b>94</b>	0.50	880	1.0	*	*		11	



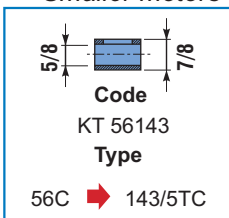
**Standard hollow shaft dimensions**

\* Requires Reduction Ring

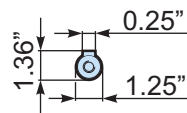
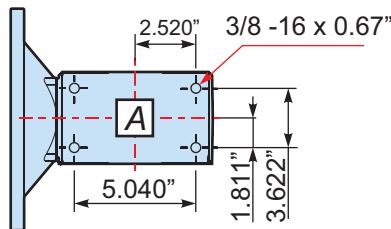
**Standard Hollow shaft**



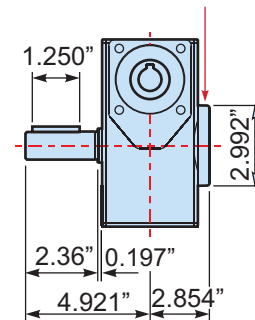
\*Reduction ring for Smaller motors



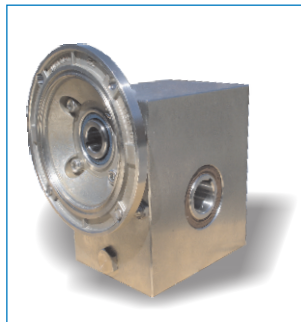
Bottom - Side (A) Mounting Holes



**Optional Output shaft Left or Right Angled**  
Protection Cup (by request)



Wormbox weight	lb.
K63R	32.2



**Selection - Input RPM 1800**

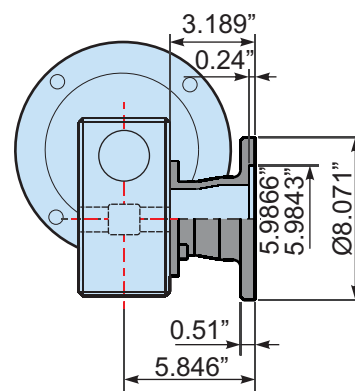
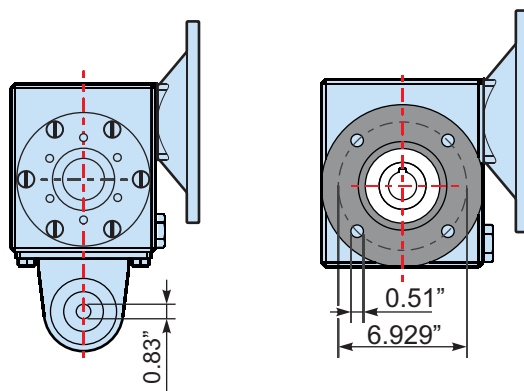
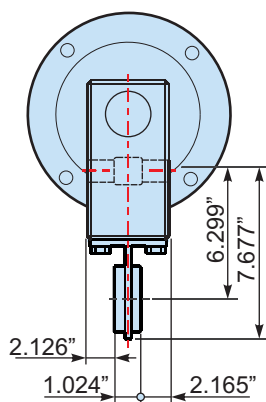
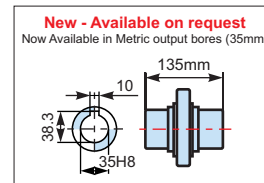
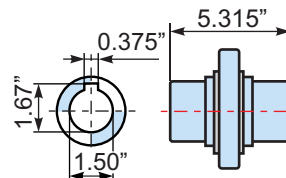
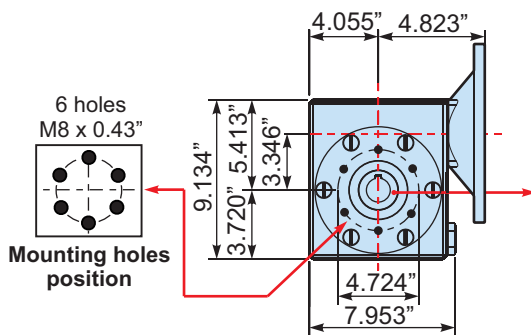
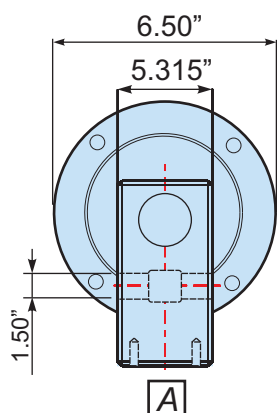
\* Available motor flanges

Type	Output Speed (RPM)	Ratio	Input HP	Output Torque [In.lbs.]	Service Factor	W	X	Y	Ratio code	Type
						56C	143/5TC	182/4TC		
						<b>K85R</b>				
	250	7	5.00	1108	1.9	*	*	*	01	
	175	10	5.00	1441	1.7	*	*	*	02	
	125	14	5.00	1967	1.3	*	*	*	03	
	87.5	20	3.00	1707	1.5	*	*	*	04	
	62.5	28	3.00	2269	1.3	*	*	*	06	
	46.1	38	3.00	2915	1.0	*	*	*	07	
	38.0	46	2.00	2253	1.2	*	*	*	08	
	33.7	52	2.00	2472	1.0	*	*	*	09	
	26.1	67	1.50	2353	1.0	*	*	*	10	
	23.6	74	1.50	2319	1.0	*	*	*	11	
	18.2	96	1.00	1833	1.1	*	*	*	12	

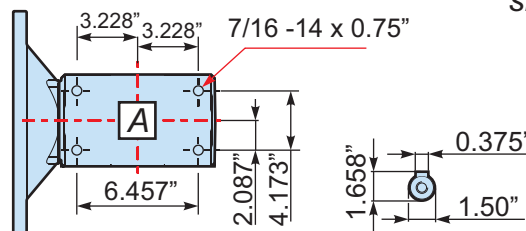
\*\* Reduction Ring And Flange Required

**Standard hollow shaft dimensions**

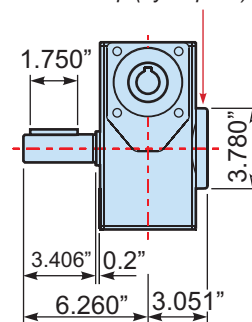
**Standard Hollow shaft**



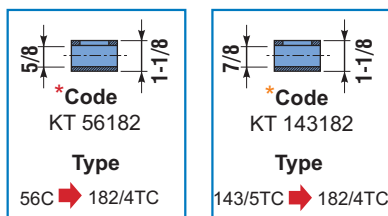
**Bottom - Side (A) Mounting Holes**



**Optional Output shaft Left or Right Angled**  
Protection Cup (by request)



**Reduction ring for smaller motors**

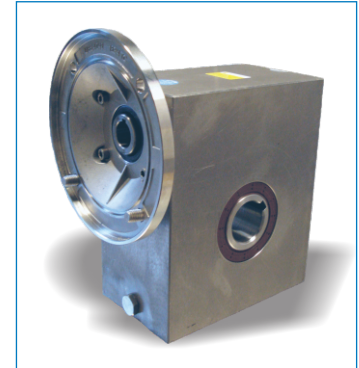


Wormbox weight	<b>lb.</b>
K85R	51.4

**Selection - Input RPM 1800**

\* Available motor flanges

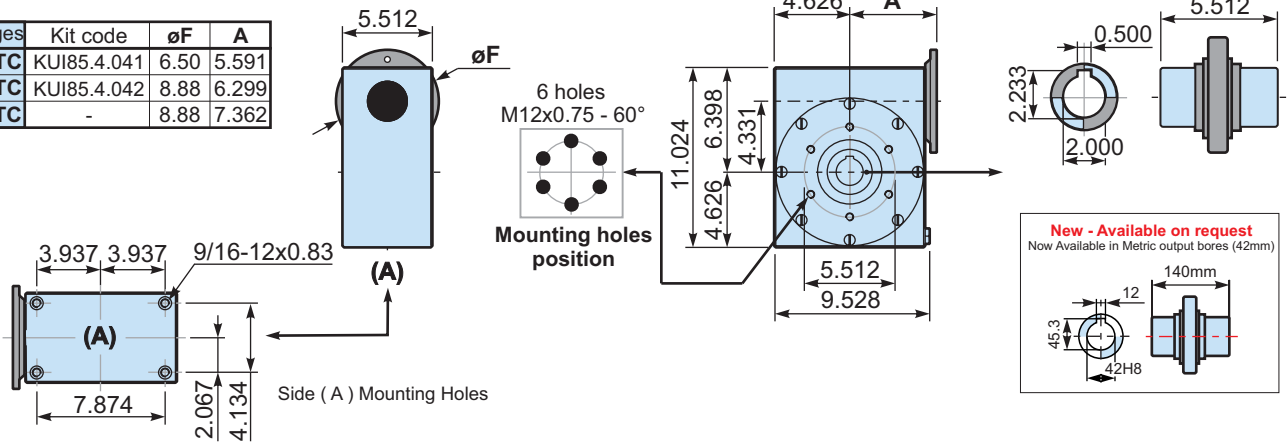
Type	Output Speed (RPM)	Ratio	Input HP	Output Torque [In.lbs.]	Service Factor	* Available motor flanges			Ratios code	Type
						X	Y	AA		
						143/5TC	182/4TC	213/5TC		
<b>K110R</b>	250.0	7	10	2219	1.8	*	*	*	01	<b>K110R</b>
	175.0	10	10	3097	1.4	*	*	*	02	
	109.4	16	10	4725	1.0	*	*	*	03	
	87.5	20	7.5	4430	1.0	*	*	*	04	
	76.1	23	5	3314	1.3	*	*		05	
	58.3	30	5	4106	1.3	*	*		06	
	46.1	38	5	5132	1.1	*	*		07	
	38.9	45	3	3549	1.4	*	*		08	
	33.0	53	3	4009	1.3	*	*		09	
	27.3	64	2	3181	1.4	*	*		10	
	20.8	84	2	3933	1.1	*	*		11	
	17.7	99	2	4279	1.0	*	*		12	



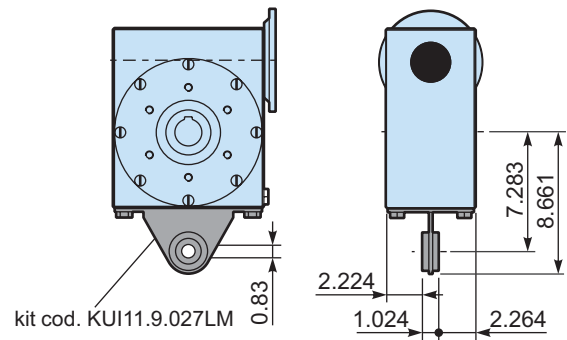
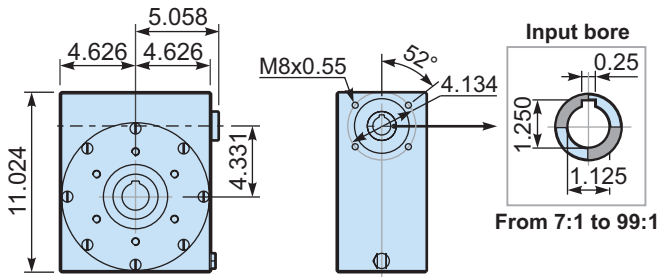
\* Requires Reduction Bushing \* Available upon Request

**Standard hollow shaft dimensions**

M. flanges	Kit code	øF	A
143/5 TC	KUI85.4.041	6.50	5.591
182/4 TC	KUI85.4.042	8.88	6.299
213/5 TC	-	8.88	7.362



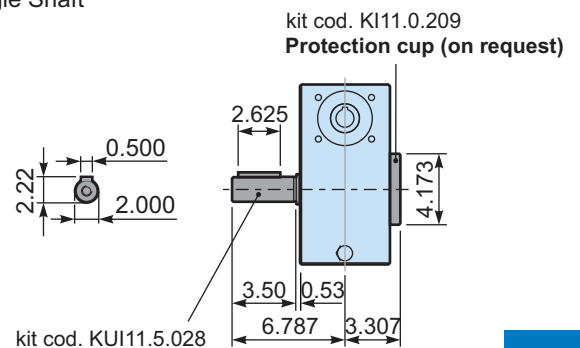
**Optional Torque Arm**



**\*Reduction ring for Smaller motors**

<p>5/8 *Code KT 56182 Type 56C → 182/4TC</p>	<p>7/8 *Code KT 143182 Type 143/5TC → 182/4TC</p>
--	---

**Single Shaft**

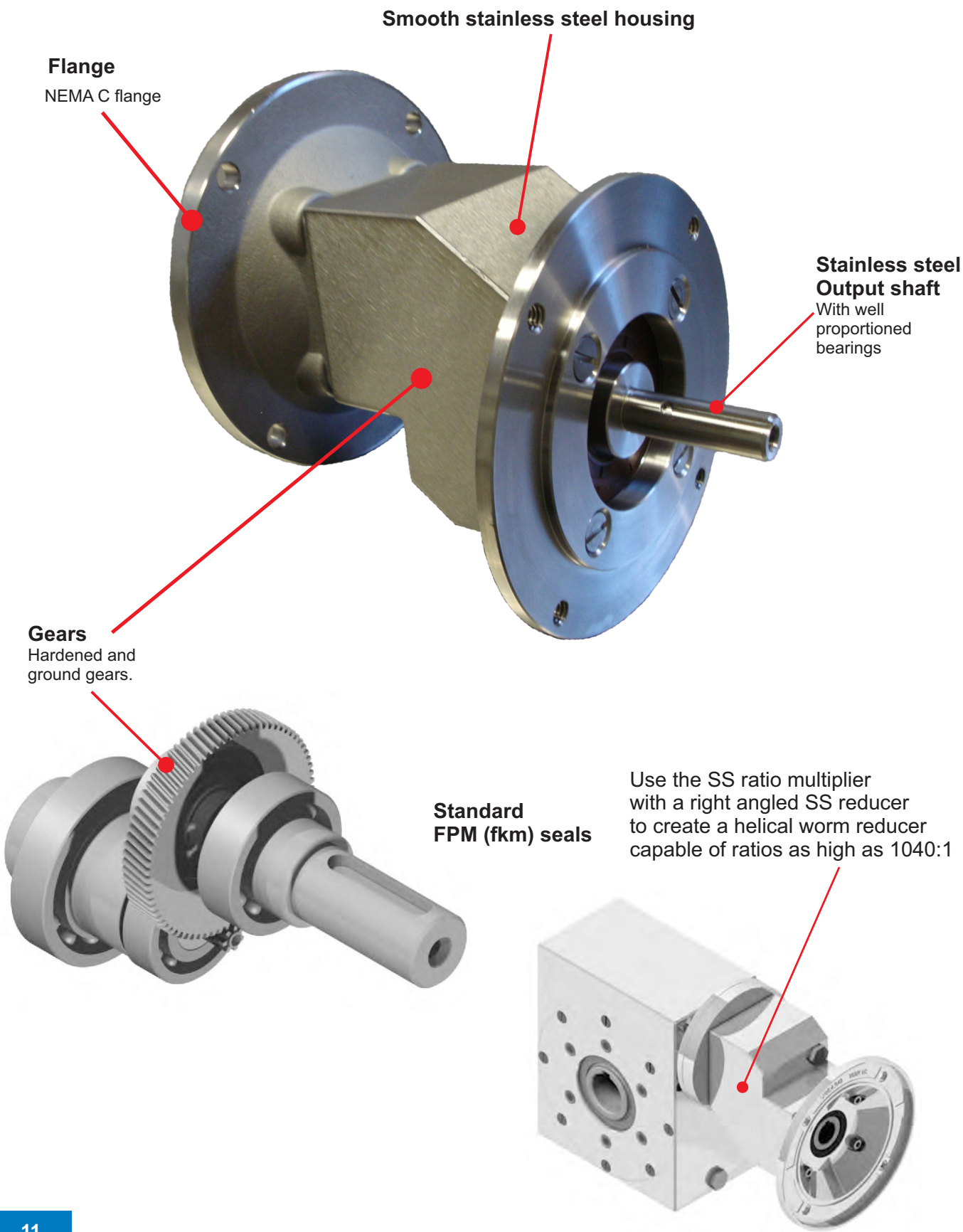


Wormbox weight	lb.
K110R	88.0

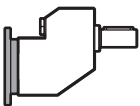
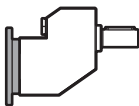
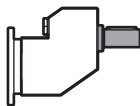
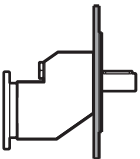
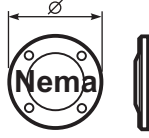
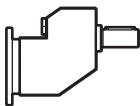
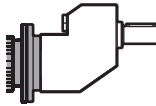
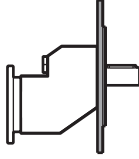
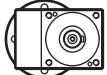


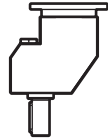

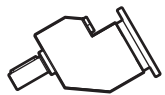
# Stainless Steel Ratio Multipliers

## Washdown Stainless Steel Reducers

2



# HOW TO ORDER

Type	Size	Mounting	Ratio	Output shaft	Output Flange	Motor size	Mounting position
<b>K</b>	<b>411I</b>	<b>-F</b>	<b>1.57</b>	<b>X</b>	<b>U</b>	<b>-W</b>	<b>B3</b>
 <b>K</b>	<b>411I</b> <b>511I</b>	 <b>-N</b>	See technical data table	 <b>X</b>	 <b>U</b>	 <b>Nema</b>	 <b>B3</b> STANDARD
 <b>M</b>		 <b>-F</b>		→ STANDARD 411I <b>X</b> → $\varnothing 0.625$ 511I <b>W</b> → $\varnothing 0.875$	411I <b>U</b> → $\varnothing 6.50$ 511I <b>U</b> → $\varnothing 6.50$	411I <b>-W</b> 56C <b>-X</b> 143/5TC 511I <b>-X</b> 143/5TC <b>-Y</b> 182/4TC	 <b>B6</b>
							 <b>B7</b>
							 <b>B8</b>
							 <b>V5</b>
							 <b>V6</b>
							 <b>V8</b>

## On request

**A** Double input / output oil seals

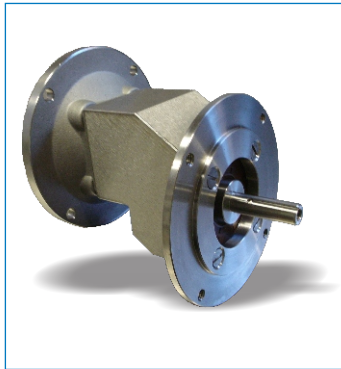
**B** Food lube



## INLINE HELICAL REDUCERS

### Selection - Input RPM 1750

\* Available motor flanges



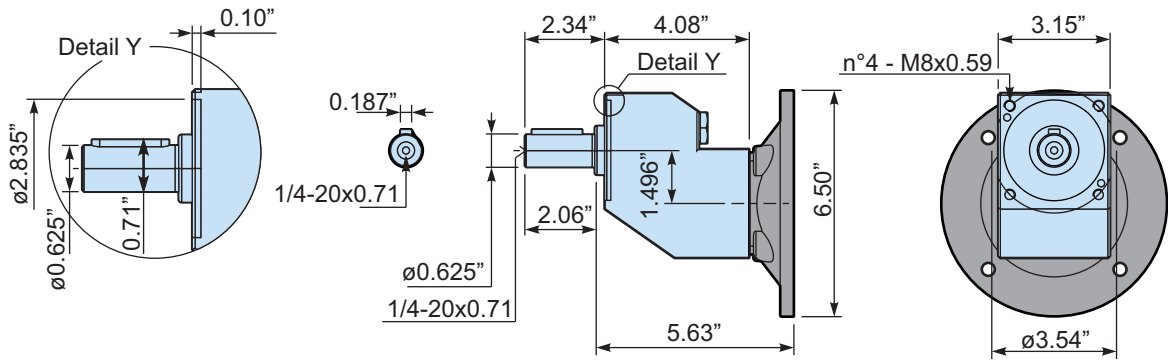
Type	Output Speed (RPM)	Ratio	Input HP	Output Torque [In.lbs.]	Service Factor	Motor Flange		Ratio code	Type
						W	X		
						56C	143/5TC		

<b>4111</b>	1114	<b>1.57</b>	2	111	1.6	*	*	01	<b>4111</b>
	616	<b>2.84</b>	2	201	1.5	*	*	02	
	531	<b>3.29</b>	2	233	1.4	*	*	03	
	453	<b>3.87</b>	2	273	1.3	*	*	04	
	379	<b>4.62</b>	2	326	1.3	*	*	05	
	278	<b>6.30</b>	1.5	334	1.2	*	*	06	
	213	<b>8.22</b>	0.75	218	1.5	*	*	07	
	161	<b>10.86</b>	0.5	192	1.3	*	*	08	

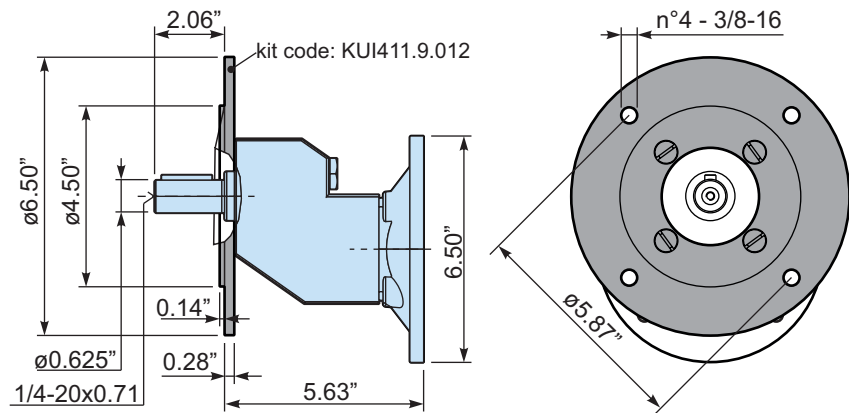
\* Requires Reduction Bushing

2

### Standard Multiplier dimensions - INCH



### Output Flange



\*Code  
 KT 56143  
 Type  
 56C → 143/5TC

The 4111 gearboxes are supplied with an oil quantity suitable for all mounting positions

Wormbox weight	lb.
4111	12.5

Gearbox	Oil Qty Ounces
4111	4.9



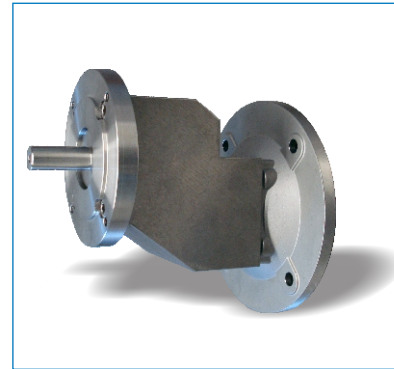
**INLINE HELICAL REDUCERS**

**Selection - Input RPM 1800**

\* Available motor flanges

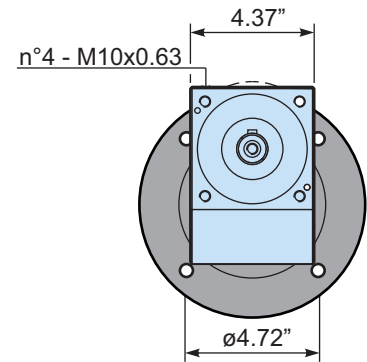
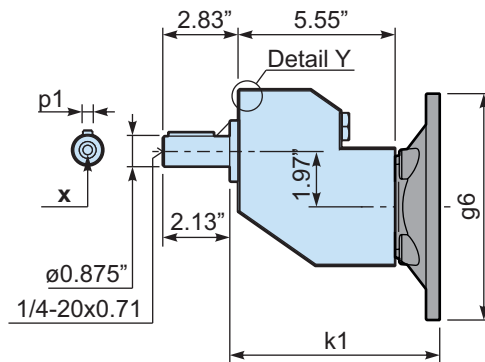
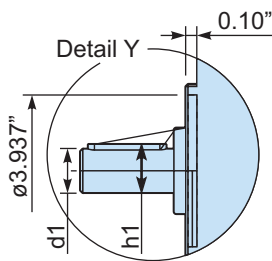
Type	Output Speed (RPM)	Ratio	Input HP	Output Torque [In.lbs.]	Service Factor	Motor Flange		Ratios code	Type
						X	Y		
						143/5TC	182/4TC		

<b>5111</b>	1346	<b>1.30</b>	5	229	1.5	*	**	01	<b>5111</b>
	714	<b>2.45</b>	5	432	1.4	*	**	02	
	528	<b>3.31</b>	5	585	1.4	*	**	03	
	406	<b>4.31</b>	3	456	2.1	*	**	04	
	332	<b>5.27</b>	3	558	1.7	*	**	05	
	230	<b>7.63</b>	2	538	1.8	*	**	06	
	167	<b>10.50</b>	1.5	556	1.3	*	**	07	



\* Requires Bushing

**Standard Multiplier dimensions - INCH**

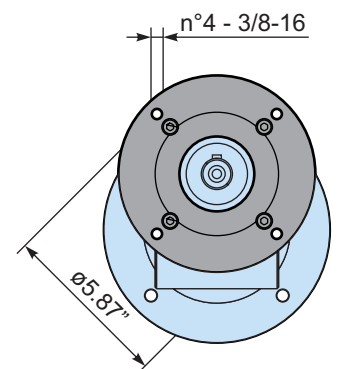
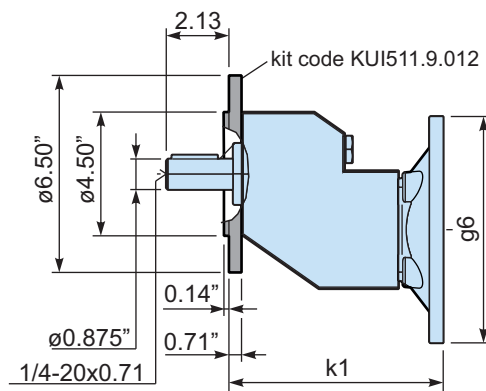
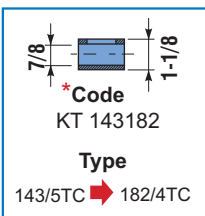


**Output shaft**

	Shaft - d1	p1	h1	x
<b>Standard</b>	ø0.875	0.187	0.96	1/4-20x0.71

**Input flanges**

	k1	g6	kit code
56C-143/5TC	7.22	6.50	KUI85.4.041
182/4TC	7.93	8.88	KUI85.4.042



The **5111** gearboxes are supplied with an oil quantity suitable for all mounting positions

Wormbox weight	lb.
5111	27.3

Gearbox	Oil Qty Ounces
5111	15.8



Input RPM	Output RPM	Total Ratio	411		HP	Output Torque (IN.LBS)	Service Factor
			Multiplier Ratio	K63R Gearbox Ratio			
1750	54.17	32.31	4.62	7	1.5	1349	1.0
1750	46.40	37.71	1.57	24	1.5	1378	1.0
1750	45.26	38.67	3.87	10	1	1050	1.4
1750	41.05	42.63	2.84	15	1	1129	1.3
1750	39.68	44.10	6.30	7	1	1227	1.1
1750	37.92	46.15	4.62	10	1	1254	1.2
1750	35.42	49.41	3.29	15	1	1309	1.1
1750	32.41	54.00	2.84	19	1	1368	1.1
1750	30.41	57.56	8.22	7	0.75	1201	1.2
1750	27.96	62.59	3.29	19	0.75	1189	1.2
1750	25.28	69.23	4.62	15	0.75	1375	1.1
1750	24.75	70.71	1.57	45	0.75	1087	1.3
1750	23.82	73.47	3.87	19	0.75	1396	1.1
1750	22.14	79.06	3.29	24	0.5	963	1.6
1750	21.28	82.22	8.22	10	0.5	1117	1.3
1750	20.52	85.26	2.84	30	0.5	1002	1.5
1750	19.96	87.69	4.62	19	0.5	1111	1.4
1750	18.52	94.50	6.30	15	0.5	1252	1.2
1750	17.10	102.32	2.84	36	0.5	1081	1.4
1750	16.12	108.57	10.86	10	0.5	1474	1.0
1750	15.09	116.00	3.87	30	0.5	1363	1.2
1750	14.76	118.59	3.29	36	0.5	1252	1.2
1750	14.19	123.33	8.22	15	0.33	1078	1.4
1750	13.68	127.89	2.84	45	0.33	865	1.7
1750	12.64	138.46	4.62	30	0.33	1074	1.5
1750	11.81	148.24	3.29	45	0.33	1003	1.4
1750	10.53	166.15	4.62	36	0.33	1158	1.4
1750	9.26	189.00	6.30	30	0.33	1466	1.1
1750	8.43	207.69	4.62	45	0.25	1064	1.4
1750	7.72	226.80	6.30	36	0.25	1198	1.4
1750	7.09	246.67	8.22	30	0.25	1450	1.1
1750	6.72	260.57	10.86	24	0.25	1587	1.0
1750	6.17	283.50	6.30	45	0.25	1453	1.0
1750	5.91	296.00	8.22	36	0.25	1563	1.0
1750	5.66	309.23	4.62	67	0.25	1392	1.0
1750	5.37	325.71	10.86	30	0.08	613	2.6
1750	4.81	363.47	3.87	94	0.08	454	2.9
1750	4.03	433.85	4.62	94	0.08	541	2.4
1750	3.58	488.57	10.86	45	0.08	801	1.9
1750	3.18	550.89	8.22	67	0.08	793	1.7
1750	2.96	592.20	6.30	94	0.08	739	1.8
1750	2.41	727.43	10.86	67	0.08	1048	1.3
1750	2.26	772.89	8.22	94	0.08	965	1.4
1750	2.01	868.57	10.86	80	0.08	1188	1.1
1750	1.71	1020.57	10.86	94	0.08	1274	1.0





Input RPM	Output RPM	Total Ratio	411	085	HP	Output Torque (IN.LBS)	Service Factor
			Multiplier Ratio	Gearbox Ratio			
1750	32.33	54.13	3.87	14	2	2832	1.2
1750	30.79	56.84	2.84	20	2	2916	1.1
1750	29.31	59.71	1.57	38	2	2634	1.3
1750	27.99	62.53	2.84	22	1.5	2376	1.3
1750	27.08	64.62	4.62	14	1.5	2535	1.3
1750	26.56	65.88	3.29	20	1.5	2535	1.2
1750	24.15	72.47	3.29	22	1.5	2753	1.1
1750	23.03	76.00	10.86	7	0.5	1121	1.3
1750	22.63	77.33	3.87	20	1.5	2976	1.1
1750	21.99	79.58	2.84	28	1.5	2844	1.3
1750	21.28	82.22	8.22	10	1	2206	1.2
1750	20.57	85.07	3.87	22	1	2155	1.5
1750	19.84	88.20	6.30	14	1	2307	1.5
1750	18.96	92.31	4.62	20	1	2368	1.4
1750	17.23	101.54	4.62	22	1	2572	1.3
1750	16.20	108.00	2.84	38	1	2382	1.5
1750	15.20	115.11	8.22	14	1	3011	1.1
1750	13.98	125.18	3.29	38	1	2761	1.3
1750	13.39	130.74	2.84	46	1	2761	1.3
1750	12.63	138.60	6.30	22	0.75	2633	1.2
1750	11.91	146.93	3.87	38	0.75	2430	1.5
1750	11.55	151.53	3.29	46	0.75	2400	1.4
1750	10.22	171.29	3.29	52	0.75	2544	1.2
1750	9.98	175.38	4.62	38	0.75	2901	1.3
1750	8.70	201.07	3.87	52	0.75	2986	1.1
1750	8.24	212.31	4.62	46	0.75	3363	1.1
1750	7.93	220.71	3.29	67	0.5	2152	1.4
1750	7.33	238.86	10.86	22	0.5	3025	1.1
1750	7.29	240.00	4.62	52	0.5	2376	1.3
1750	6.76	259.07	3.87	67	0.5	2526	1.3
1750	6.41	272.84	2.84	96	0.5	2169	1.2
1750	6.12	286.13	3.87	74	0.5	2490	1.2
1750	6.04	289.80	6.30	46	0.5	3061	1.2
1750	5.76	304.00	10.86	28	0.5	3621	1.1
1750	5.66	309.23	4.62	67	0.5	3015	1.1
1750	5.60	312.44	8.22	38	0.5	3445	1.1
1750	5.53	316.24	3.29	96	0.33	1659	1.5
1750	5.34	327.60	6.30	52	0.33	2141	1.5
1750	5.12	341.54	4.62	74	0.33	1961	1.5
1750	4.71	371.20	3.87	96	0.33	1948	1.4
1750	4.63	378.22	8.22	46	0.33	2636	1.4
1750	4.24	412.57	10.86	38	0.33	3003	1.2
1750	4.15	422.10	6.30	67	0.33	2716	1.2
1750	4.09	427.56	8.22	52	0.33	2794	1.1
1750	3.95	443.08	4.62	96	0.33	2325	1.2
1750	3.75	466.20	6.30	74	0.33	2677	1.1
1750	3.50	499.43	10.86	46	0.33	3481	1.0
1750	3.18	550.89	8.22	67	0.25	2686	1.2
1750	3.10	564.57	10.86	52	0.25	2795	1.1
1750	2.89	604.80	6.30	96	0.25	2404	1.1
1750	2.88	608.44	8.22	74	0.25	2647	1.1
1750	2.41	727.43	10.86	67	0.08	1135	2.8
1750	2.22	789.33	8.22	96	0.08	1004	2.7
1750	2.18	803.43	10.86	74	0.08	1118	2.7
1750	1.68	1042.29	10.86	96	0.08	1326	2.0



Input RPM	Output RPM	Total Ratio	411	110	HP	Output Torque (IN.LBS)	Service Factor
			Multiplier Ratio	Gearbox Ratio			
1750	17.36	100.80	6.30	16	1.5	4157	1.2
1750	16.49	106.15	4.62	23	2	5515	1.0
1750	16.20	108.00	2.84	38	2	5032	1.4
1750	15.09	116.00	3.87	30	2	5601	1.3
1750	13.98	125.18	3.29	38	2	5832	1.2
1750	13.68	127.89	2.84	45	2	5800	1.1
1750	13.26	132.00	1.57	84	1.5	3861	1.3
1750	12.64	138.46	4.62	30	2	6686	1.1
1750	12.08	144.90	6.30	23	1.5	5646	1.0
1750	11.91	146.93	3.87	38	2	6846	1.0
1750	11.62	150.63	2.84	53	2	6327	1.0
1750	10.64	164.44	8.22	20	1	4379	1.2
1750	10.06	174.00	3.87	45	1.5	5918	1.1
1750	9.98	175.38	4.62	38	1.5	6129	1.2
1750	9.62	181.89	2.84	64	1.5	5648	1.0
1750	9.26	189.00	6.30	30	1.5	6845	1.1
1750	8.54	204.93	3.87	53	1.5	6456	1.1
1750	8.30	210.82	3.29	64	1	4364	1.3
1750	7.33	238.74	2.84	84	1	4656	1.1
1750	7.15	244.62	4.62	53	1	5137	1.3
1750	7.07	247.47	3.87	64	1	5123	1.2
1750	6.22	281.37	2.84	99	1	5065	1.0
1750	6.17	283.50	6.30	45	1	6428	1.0
1750	5.92	295.38	4.62	64	0.75	4586	1.3
1750	5.60	312.44	8.22	38	0.75	5459	1.3
1750	5.39	324.80	3.87	84	0.75	4751	1.2
1750	5.37	325.71	10.86	30	0.5	3932	1.3
1750	5.37	326.12	3.29	99	0.75	4403	1.2
1750	5.24	333.90	6.30	53	0.75	5259	1.3
1750	4.73	370.00	8.22	45	0.75	6292	1.1
1750	4.57	382.80	3.87	99	0.75	5168	1.0
1750	4.51	387.69	4.62	84	0.5	3780	1.4
1750	4.34	403.20	6.30	64	0.5	4173	1.4
1750	4.24	412.57	10.86	38	0.5	4806	1.3
1750	4.02	435.78	8.22	53	0.5	4576	1.5
1750	3.83	456.92	4.62	99	0.5	4113	1.3
1750	3.58	488.57	10.86	45	0.5	5539	1.2
1750	3.33	526.22	8.22	64	0.5	5447	1.1
1750	3.31	529.20	6.30	84	0.5	5160	1.1
1750	3.04	575.43	10.86	53	0.5	6042	1.1
1750	2.81	623.70	6.30	99	0.33	3705	1.4
1750	2.53	690.67	8.22	84	0.33	4445	1.2
1750	2.52	694.86	10.86	64	0.33	4747	1.2
1750	2.15	814.00	8.22	99	0.33	4836	1.1
1750	1.92	912.00	10.86	84	0.25	4446	1.2
1750	1.63	1074.86	10.86	99	0.25	4837	1.1






Input RPM	Output RPM	Total Ratio	511	110	HP	Output Torque (IN.LBS)	Service Factor
			Multiplier Ratio	Gearbox Ratio			
1750	67.31	26.00	1.30	20	5	3462	1.6
1750	58.53	29.90	1.30	23	5	3884	1.3
1750	58.04	30.15	4.31	7	5	4449	1.2
1750	52.83	33.13	3.31	10	5	4776	1.2
1750	47.41	36.91	5.27	7	5	5446	1.0
1750	44.64	39.20	2.45	16	5	5389	1.1
1750	40.63	43.08	4.31	10	3	3727	1.6
1750	35.71	49.00	2.45	20	3	3914	1.5
1750	33.19	52.73	5.27	10	3	4562	1.3
1750	33.02	53.00	3.31	16	3	4372	1.3
1750	32.79	53.38	7.63	7	3	4725	1.1
1750	31.06	56.35	2.45	23	3	4392	1.2
1750	29.91	58.50	1.30	45	3	3979	1.5
1750	26.42	66.25	3.31	20	3	5292	1.1
1750	25.39	68.92	4.31	16	3	5685	1.0
1750	23.81	73.50	2.45	30	3	5324	1.3
1750	22.95	76.25	7.63	10	2	4398	1.3
1750	21.03	83.20	1.30	64	3	5167	1.1
1750	20.74	84.36	5.27	16	2	4639	1.3
1750	18.80	93.10	2.45	38	3	6507	1.0
1750	17.66	99.08	4.31	23	2	5148	1.1
1750	16.59	105.45	5.27	20	2	5616	1.1
1750	15.87	110.25	2.45	45	2	5000	1.3
1750	14.34	122.00	7.63	16	1.5	5032	1.2
1750	13.90	125.88	3.31	38	2	5865	1.2
1750	13.54	129.23	4.31	30	2	6240	1.2
1750	11.74	149.06	3.31	45	1.5	5070	1.3
1750	11.06	158.18	5.27	30	1.5	5728	1.3
1750	10.42	168.00	10.50	16	1	4619	1.3
1750	9.98	175.38	7.63	23	1	4556	1.3
1750	9.03	193.85	4.31	45	1.5	6593	1.0
1750	8.73	200.36	5.27	38	1.5	7001	1.0
1750	8.33	210.00	10.50	20	1	5592	1.1
1750	7.65	228.75	7.63	30	1	5523	1.3
1750	7.25	241.50	10.50	23	0.75	4705	1.2
1750	6.35	275.69	4.31	64	1	5707	1.0
1750	6.04	289.75	7.63	38	1	6750	1.1
1750	5.56	315.00	10.50	30	0.75	5704	1.3
1750	5.10	343.13	7.63	45	0.75	5835	1.1
1750	4.84	361.85	4.31	84	0.75	5292	1.0
1750	4.39	399.00	10.50	38	0.75	6971	1.0
1750	3.70	472.50	10.50	45	0.5	5357	1.2
1750	3.14	556.50	10.50	53	0.5	5844	1.2
1750	2.73	640.50	7.63	84	0.33	4122	1.3
1750	2.60	672.00	10.50	64	0.33	4591	1.3
1750	2.32	754.88	7.63	99	0.33	4484	1.2
1750	1.98	882.00	10.50	84	0.25	4300	1.3
1750	1.68	1039.50	10.50	99	0.25	4678	1.1







**UNITS K30R TO K110R ARE SUPPLIED WITH SYNTHETIC OIL, PROVIDING “ LONG LIFE “ LUBRICATION FOR THE MOUNTING POSITIONS B8 - B3 - V5 - V6 ( FOR B6 - B7 SPECIFY IN THE ORDER).**

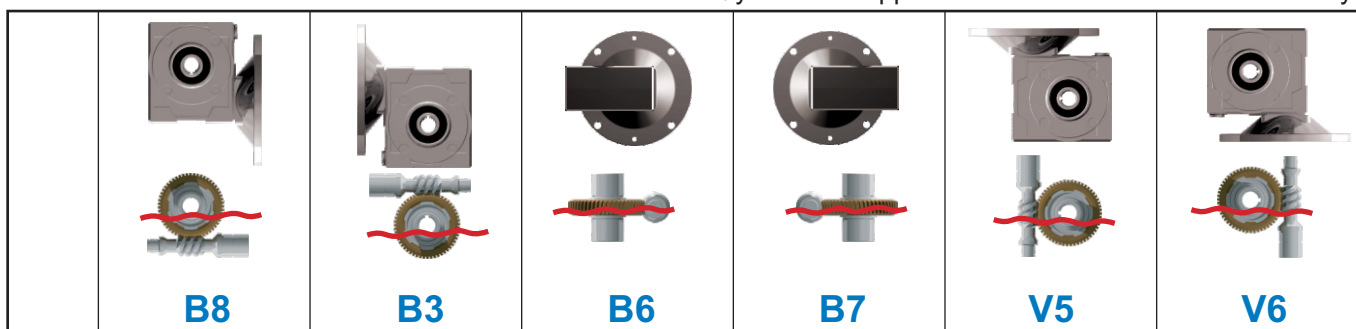
\* Standard Kel-Tech Oil Type

 	TEMPERATURE				DIN 51517-3 ISO 12925-1	
	-85 °C	0 °C	+120 °C			
Telium VSF 320 *	-30 °C		+80 °C		synthetic	
FoodLube Endure 00 - UH1	-20 °C		+150 °C			
<b>Mobil</b>						
Mobil Glygoyle 460 H1	-33 °C		+265 °C		synthetic	
						
Klubersynth Uh1 6-320	-35 °C		+120 °C		synthetic	

 Low temperature  
 For foods

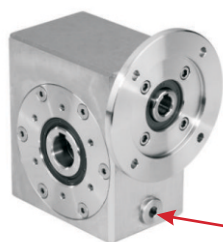
• **Standard mounting positions**

▪ Oil Qty lines are approx. And for orientation reference only



OIL QUANTITY FOR EVERY POSITION (OUNCES)						
K30R	2.11	2.11	2.11	2.11	2.11	2.11
K45R	5.28	5.28	7.04	7.04	5.28	5.28
K50R	7.74	7.74	9.85	9.85	7.74	7.74
K63R	21.1	21.1	28.9	28.9	21.1	21.1
K85R	49.3	49.3	59.8	59.8	49.3	49.3
K110R	<b>73.9</b> <sup>▪</sup>	123.2	<b>87.9</b> <sup>▪</sup>	<b>87.9</b> <sup>▪</sup>	<b>56.3</b> <sup>▪</sup>	<b>56.3</b> <sup>▪</sup>

▪ Subtract oil from the standard Qty or order complete.

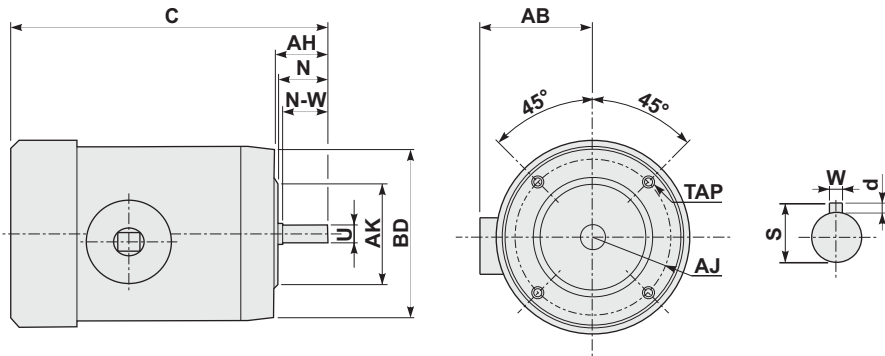


Oil plug for oil removal

**Special Purpose Lubricants Available on request**



# Nema Standard Motor Dimensions Table



## NEMA SHAFT AND KEYWAY DIMENSIONS

NEMA SHAFT (U)	KEYWAY DIMENSIONS (W x d)	(S)
5/8	3/16 x 3/32	0.709
7/8	3/16 x 3/32	0.964
1 1/8	1/4 x 1/8	1.241
1 3/8	5/16 x 5/32	1.518
1 5/8	3/8 x 3/16	1.796

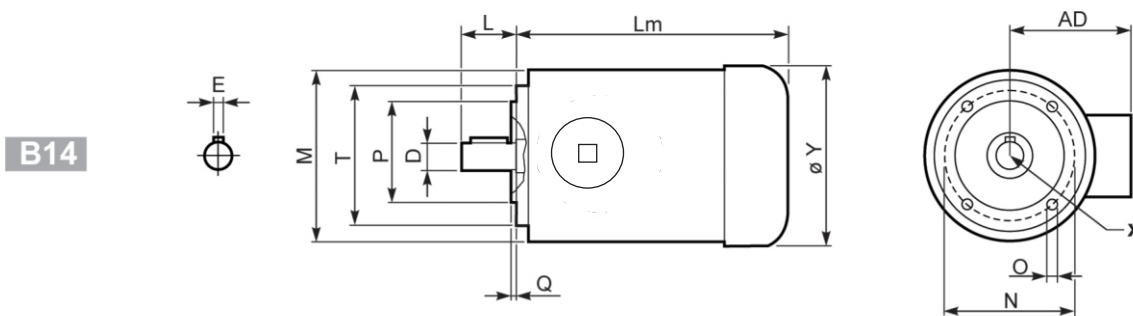
The dimensions shown on these pages are for general reference only.

## NEMA DIMENSIONS - TEFC - ( TENV on request )

Nema Frame	N	U	N-W	AH	AJ	AK	BD	TAP	KEY	AB	C*
56	1 15/16	5/8	1 7/8	2 1/16	5 7/8	4 1/2	6 1/2	3/8-16	3/16	5 5/16	9.31 ÷ 13.81
143T 145T	2 3/8	7/8	2 1/4	2 1/8	5 7/8	4 1/2	6 1/2	3/8-16	3/16	5 5/16	11.75 ÷ 14.25
182T 184T	2 7/8	1 1/8	2 3/4	2 5/8	7 1/4	8 1/2	8 7/8	1/2-13	1/4	6 3/8	13.90 ÷ 16.46

\* As dimension C is not governed by Nema this dimension is different for each motor manufacturer. See Manufacturers dimension print for exact C Dimension

## METRIC DIMENSIONS - TEFC - ( TENV on request )



Outside dimensions (Lm) may be different according to manufacturers

	Metric Frame	kW	D	E	L	Lm	Y	AD	P	N	M	T	O	Q	Kg
Inch	63	0.18	0.43	0.16	0.93	9.92	5.04	4.17	2.36	2.95	4.49	3.54	M5	0.10	8.2
MM	63	0.18	11	4	23.5	252	128	106	60	75	114	90	M5	2.5	8.2



• Service factor

Stainless Steel Wormboxes					
Type of load and starts per hour		Operation hours per day			
		0-2 hours	2-8 hours	8-16 hours	
Continuous or intermittent appl. with start/hour	10	Uniform	0.9	1	1.25
		Moderate	1	1.25	1.5
		Heavy	1.25	1.5	1.75
Intermittent application with start/hour	10 +	Uniform	1.25	1.5	1.75
		Moderate	1.5	1.75	2
		Heavy	1.75	2	2.25

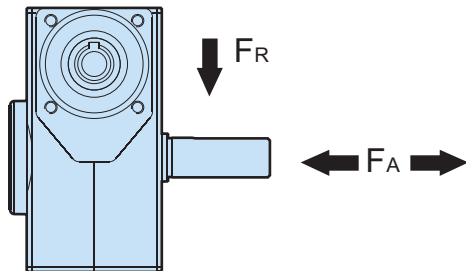
Stainless Steel Ratio Multipliers					
Type of load and starts per hour		Operation hours per day			
		0-3 hours	3-10 hours	10-24 hours	
Continuous or intermittent appl. with start/hour	10	Uniform	0.8	1	1.25
		Moderate	1.00	1.25	1.5
		Heavy	1.25	1.5	1.75
Intermittent application with start/hour	10 +	Uniform	1.00	1.25	1.5
		Moderate	1.25	1.5	1.75
		Heavy	1.5	1.75	2.15

*For high ambient Temperature, contact our technical department, as service factor may be increased for various heat limits.*

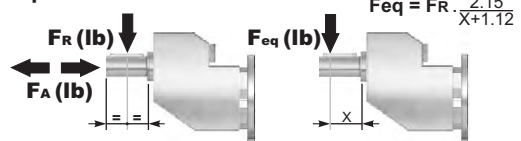
*2 poles ( 3600 rpm ) only for very intermittent use.*

• Radial and axial loads

Output Speed (RPM)	K30R		K45R		K50R		K63R		K85R		K110R	
	F <sub>A</sub> [lb.]	F <sub>R</sub> [lb.]	F <sub>A</sub> [lb.]	F <sub>R</sub> [lb.]	F <sub>A</sub> [lb.]	F <sub>R</sub> [lb.]	F <sub>A</sub> [lb.]	F <sub>R</sub> [lb.]	F <sub>A</sub> [lb.]	F <sub>R</sub> [lb.]	F <sub>A</sub> [lb.]	F <sub>R</sub> [lb.]
200	27	135	40	202	54	270	81	404.5	112	562	135	652
150	31	157	45	225	63	315	90	450	130	652	157	742
100	36	180	49	247	67	337	103.5	517	135	674	168	809
75	40	202	54	270	76	382	112.5	562	157	787	180	899
50	45	225	58	315	85	427	135	674.5	180	899	207	1034
25	56	281	67	405	108	562	157	854	225	1124	270	1349
15	63	315	90	450	126	629	180	899	261	1304	315	1574

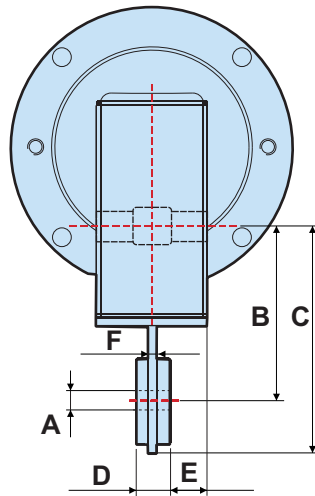


Output shaft



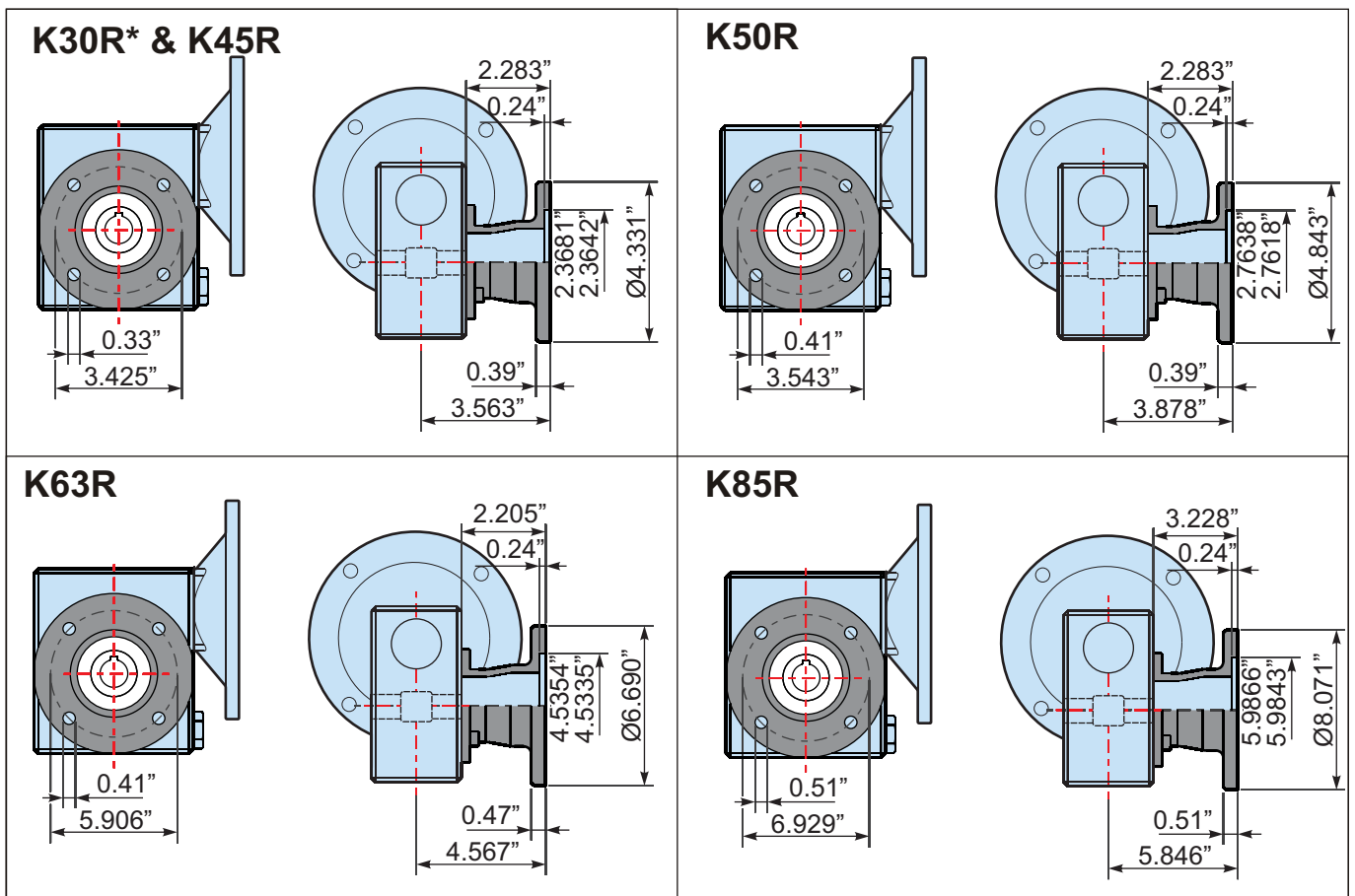
Output Speed (RPM)	4111		5111	
	F <sub>A</sub> [lb.]	F <sub>R</sub> [lb.]	F <sub>A</sub> [lb.]	F <sub>R</sub> [lb.]
700	27	135	40	202
600	31	157	45	225
400	36	180	49	247
300	40	202	54	270
200	45	225	58	315
140	56	281	67	405

# STAINLESS STEEL REACTION ARMS



INCH	A	B	C	D	E	F
<b>K30R</b>	Ø 0.43	3.15	4.33	0.79	0.67	0.20
<b>K45R</b>	Ø 0.43	3.94	5.12	0.79	0.91	0.20
<b>K50R</b>	Ø 0.43	4.33	5.51	0.79	1.22	0.20
<b>K63R</b>	Ø 0.43	5.12	6.30	0.79	1.99	0.20
<b>K85R</b>	Ø 0.83	6.30	7.68	1.02	2.17	0.24
<b>K110R</b>	Ø 0.83	7.28	8.66	1.02	2.26	0.24

# STAINLESS STEEL OUTPUT FLANGES



\*K30R mounting holes are in this configuration; figure(a), all other dimensions remain the same.

(A) 4 holes M6x0.27"



Mounting holes position



# ALL STAINLESS STEEL MOTORS

Three Phase 208-230/460 & 575V, NEMA Design B, High Efficiency, Squirrel Cage, TEFC, Class F Insulation, 40°C Ambient, Continuous Duty, 1.15 Service Factor.



- 300 Series Stainless Steel Construction
- CSA - C us CE Certified ULR
- Inverter duty - Nema MG 1 Part 31
- Washdown Duty Applications
- Pharmaceutical & Food Processing
- Beverage Industry
- Mill and Chemical Duty
- Laser Etched Nameplate
- Oversized Bearings on both ends c/w Locked Drive-end
- Oversized Conduit Box c/w Lead Seal
- 4 Quadrant Drain Plugs
- Double Lip Contact Seals
- Corrosion Resistant

HP	RPM	Nema Frame	Model Number		List Price	
			208-230/460V	575V	Round Body	With Feet
1/12	1800	56C	SS0844C	SS0845C		
1/4	1800	56C	SS1444C	SS1445C		
1/3	1800	56C	SS1344C	SS1345C		
1/2	1800	56C	SS1244C	SS1245C		
3/4	1800	56C	SS3444C	SS3445C		
1	1800	56C	SS0144C	SS0145C		
1	1800	143TC	SS0144CT	SS0145CT		
1.5	1800	56C	SS3244C	SS3245C		
1.5	1800	145TC	SS3244CT	SS3245CT		
2	1800	56C	SS0244C	SS0245C		
2	1800	145TC	SS0244CT	SS0245CT		
3	1800	182TC	SS0344CT	SS0345CT		
5	1800	184TC	SS0544CT	SS0545CT		

\* 1/2 - 3/4HP THESE RATINGS ARE ALSO AVAILABLE IN TENV (NON VENTILATED) FROM STOCK

ALL MODEL NUMBERS GIVEN ARE ROUND BODY MOTORS. FOR C-FLANGE MOTORS COMPLETE WITH BASE, ADD "F" AFTER THE MODEL NUMBER.

\*C.F - Contact factory

4



Double lip contact seals



Laser etched name plates



True inverter duty wire



Completely sealed round conduit box



Round conduit box specifically designed for the food and beverage industry



Internally locked drive-end bearing construction





# ALL STAINLESS STEEL PREMIUM EFFICIENCY MOTORS



- Three Phase 208-230/460 & 575V
- 40°C Ambient, NEMA Design B Performance
- Premium Efficiency Ie3
- Class F Insulation. Squirrel Cage, TEFC,
- Continuous Duty
- 1.15 Service Factor
- CSA - C us CE Certified ULR
- Inverter duty - Nema MG 1 Part 31
- Pharmaceutical & Food Processing
- Beverage Industry
- Mill and Chemical Duty
- Washdown Duty Applications
- Laser Etched Nameplate
- 300 Series Stainless Steel Construction

• All motors meet NEMA Premium and European IE3 efficiency standards.

HP	RPM	Nema Frame	Model Number		List Price	
			208-230/460V	575V	Round Body	With Feet
1	1800	143TC	SS0144CTP	SS0145CTP		
1.5	1800	145TC	SS3244CTP	SS3245CTP		
2	1800	145TC	SS0244CTP	SS0245CTP		
3	1800	182TC	SS0344CTP	SS0345CTP		
5	1800	184TC	SS0544CTP	SS0545CTP		
7.5	1800	213TC	SS7544CTP	SS7545CTP		
10	1800	215TC	SS1044CTP	SS1045CTP		
15	1800	254TC	SS1544CTP	SS1545CTP		
20	1800	256TC	SS2044CTP	SS2045CTP		

CHECK WITH SALES OFFICE FOR DELIVERY TIMES

\* ALL MODEL NUMBERS GIVEN ARE ROUND BODY MOTORS. FOR C-FLANGE MOTORS COMPLETE WITH BASE, ADD "F" AFTER THE MODEL NUMBER.



Double lip contact seals



Laser etched name plates



True inverter duty wire



Completely sealed round conduit box



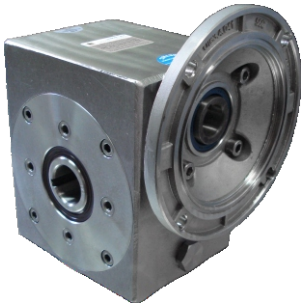
Round conduit box specifically designed for the food and beverage industry



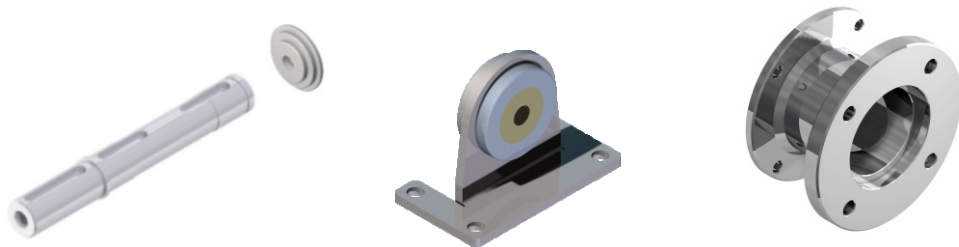
Internally locked drive-end bearing construction



# WASHDOWN STAINLESS STEEL REDUCERS LIST PRICING



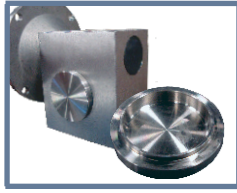
SIZE	BORE SIZE	INPUT FLANGE	LIST PRICE
K30R	0.625"	63B14	
K45R	0.75"	56C	
K50R	1.00"	56C	
K63R	1.25"	143/5TC	
K85R	1.50"	182/4TC	
K110R	2.00"	182/4TC	



SIZE	OUTPUT SHAFT KIT		TORQUE ARM		OUTPUT FLANGE	
	MODEL	LIST PRICE	MODEL	LIST PRICE	MODEL	LIST PRICE
K30R	KUI305028		KUI309027LM		KI459011	
K45R	KUI455028		KUI459027LM		KI459011	
K50R	KUI505028		KUI509027LM		KI509011	
K63R	KUI635030		KUI639027LM		KI639011	
K85R	KUI855028		KUI859027LM		KI859011	
K110R	KUI115028		KUI119027LM		KI119011	



## STAINLESS STEEL ACCESSORIES



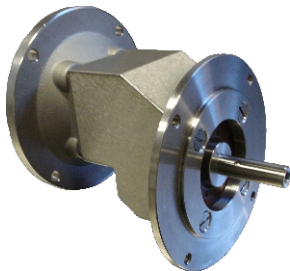
SIZE	SHAFT PROTECTION CUP CLOSED		SHAFT PROTECTION CUP OPEN		SHAFT CAP & SCREW	
	MODEL	LIST PRICE	MODEL	LIST PRICE	MODEL	LIST PRICE
K30R	I450209		I300210		UI300252	
K45R	I450209		I450210		UI450252	
K50R	I500209		I500210		UI450252	
K63R	I630209		I630210		UI630253	
K85R	I850209		I850210		UI630252	
K110R	I110209		I110210		UI110252	



## WASHDOWN STAINLESS STEEL REDUCER LIST PRICING



### Stainless Steel Inline Multipliers



SIZE	BORE SIZE	INPUT FLANGE	LIST PRICE
4111	0.625"	56C	
5111	0.875"	143/5TC	
5111	0.875"	182/4TC	



## STAINLESS STEEL METRIC MOTORS



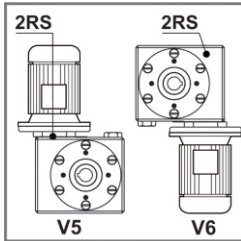
HP / KW	RPM	B14 FRAME	MODEL NUMBER		LIST PRICE
			208-230/460V	575V	
1/4 / 0.18	1750	63B14	SS1844CB14	SS1845CB14	



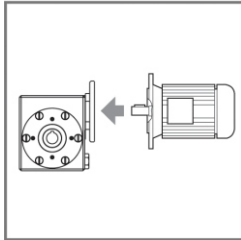
# INSTALLATION CHECK LIST



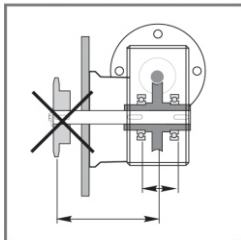
Please Check



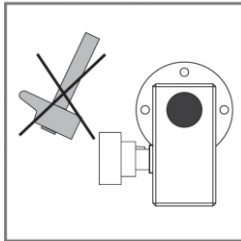
Do not change mounting positions without contacting our factory. Altering the mounting position may require special lubrication provisions which must be installed from the factory. When reducers are mounted in V5 or V6 positions and used in continuous duty applications, replace the upper bearing with a self lubricated style bearing.



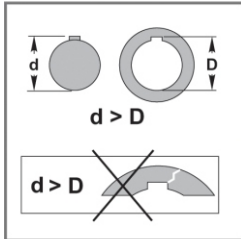
When mounting a motor to a reducer, the fastening bolts should not be tightened until both the reducer flange and the motor face are in contact. When mounting is complete check by manually rotating the fan to be sure the assembly turns freely.



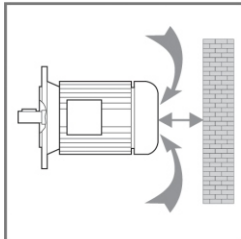
Make sure that the mounting of pulleys or pinions does not create over hung loads exceeding the capacity of the reducer.



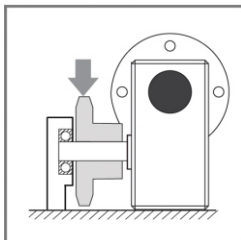
When mounting pinions, pulleys or couplings on the reducers shaft, protect bearings from impact by using the appropriate pullers and threaded holes in the end of the reducer shaft.



When mounting items to the reducer shaft, appropriate anti-seize and oxidizer compounds should be used. Also ensure key dimensions are correct.



Make sure there is sufficient space between any obstructions and the motors air intake area to provide adequate cooling for the motor.



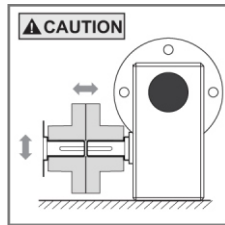
For very heavy radial load, additional output shaft support may be required to prevent premature bearing failure or shaft breakage from bending fatigue.



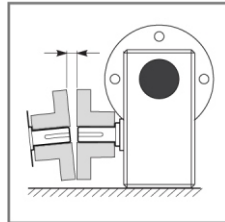
# INSTALLATION CHECK LIST



Please Check



The system of connected rotating parts must be free from critical speed, torsional or other type vibration, no matter how induced. The responsibility for this system analysis lies with the purchaser of the speed reducer.



Check shaft and coupling alignment. Check proper coupling gap before locking all foundation bolts which should be routinely checked.



For safety, Buyer or User should provide protective guards over all shaft extensions and any moving apparatus mounted thereon. The User is responsible for checking all applicable safety codes in their area and providing suitable guards. Failure to do so may result in bodily harm and/or damage to the equipment.



Test run the first unit to verify proper operation.



In applications where multiple starts, stops or reverses occurs, it is recommended to glue/seal the fastening bolts of the output flange and feet.



## INTRODUCTION

- In order to assure the service life of this gearbox and to minimize any downtime, please follow the procedures indicated on this page.

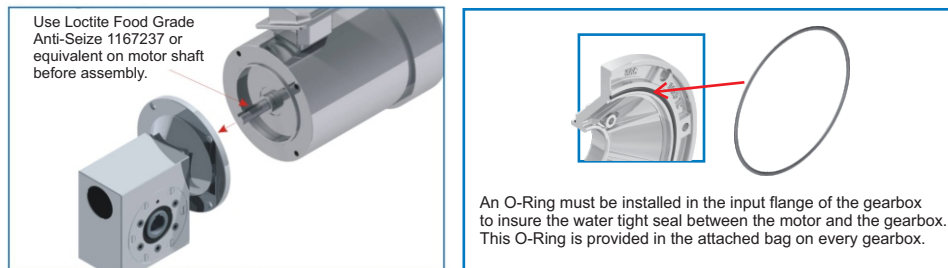
## DELIVERY

- Visually inspect the gearbox for any apparent damage that may have occurred during shipping. If there is any damage to the shipping container/box and there is evidence of excessive damage, please refuse delivery of the gearbox, or contact us immediately.

## INSTALLATION

Before installing the gearbox, make sure that the nameplate data is correct, and in accordance with the specifications required. All of this data can be found etched on the back of the gearbox and on top of the motor.

### HOW TO ASSEMBLE THE MOTOR



## MEASURING THE OPERATING TEMPERATURE

Worm gearboxes, because of the design, transform part of their installed power into heat which is disposed of throughout the housing of the gearbox. This may cause measured temperatures at the top of the housing in the range of 80-100°C without causing any adverse effects on the gearbox.

This heat loss will often cause the housing to become too hot to touch. It is therefore wrong to assume that the gearbox is too hot just because it cannot be touched. In fact, it cannot be touched as soon as the temperature goes above 50 °C.

It is important to check that once the gearbox has reached the normal speed, the operating temperature remains more or less constant under the same work conditions. This indicates that the gearbox is running in a trouble-free manner.

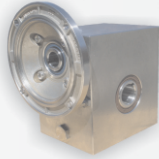
## WARNING

- Under no circumstances can the reducers be used in winch applications, man lift or people moving devices.
- Reducers are not to be considered fail safe or self-locking devices. If these features are required, a properly sized, independent holding device should be utilized. Reducers should not be used as a break.
- Any brakes that are used in conjunction with a reducer must be sized or positioned in such a way so as to not subject the reducer to loads beyond the catalog rating.
- Hot oil and reducers can cause severe burns. Use extreme care when removing lubrication plugs or vents.
- Make certain that the power supply is disconnected before attempting to service or remove any components.
  
- Buyer shall be solely responsible for determining the adequacy of the product for any and all uses to which buyer shall apply the product.

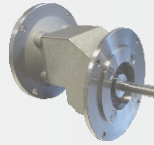
## SELLING CONDITIONS

Warranty for manufacturing defects will expire one year from the invoice date. Kel-Tech will replace or repair defective parts but will not accept any further charges for direct or indirect damages of any kind. The warranty will become null and void if repairs or changes are carried out without our prior written authorization.

Our company will not be responsible for any direct or indirect damages, caused by a wrong use of the products or for not observing any of the conditions stated above.



Gearboxes



Ratio Multipliers

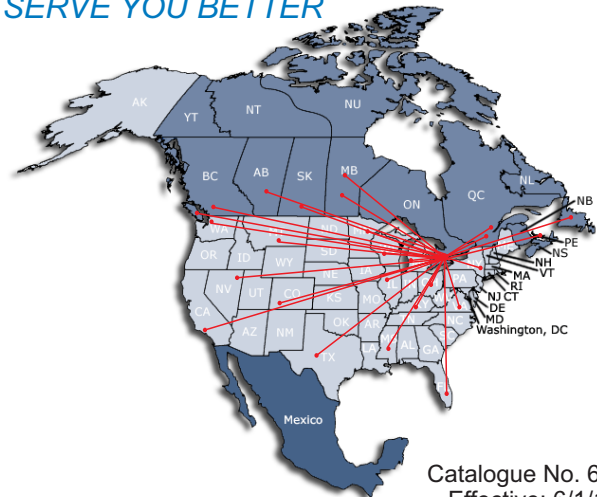
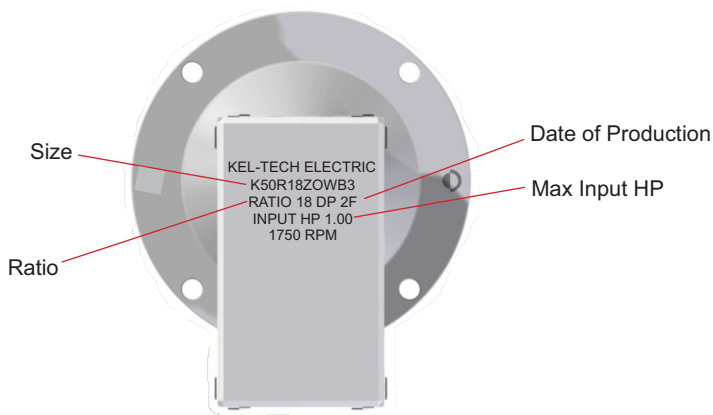


Motors



**PRODUCT IDENTIFICATION**

**WE SHIP ACROSS NORTH AMERICA EVERY DAY TO SERVE YOU BETTER**



Catalogue No. 6000  
Effective: 6/1/15

**Stainless Steel Washdown**

*Reducers & Motors*



HEADQUARTERS  
598 King Forest Court  
Burlington, ON. Canada

USA Office  
TBA

Toll Free 1-877-279-4123  
Tel. 905-634-8004  
Fax 905-634-3113

[home-page](#)

[www.kel-techelectric.com](http://www.kel-techelectric.com)